

# Petersburg Properties LLC



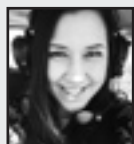
George Doyle  
907-518-0639



Sarah Holmgrain  
907-518-0718



Leif Stenfjord  
206-512-6505



Karna Cristina  
206-554-1522

301 S. NORDIC DRIVE



In-town property that has been operated as a B&B and Fishing Lodge. Separate studio rental and shop building. Plenty of room for those needing space.  
.....\$295,000

106 KOENIGS LANE



Room to grow on this 1.5 acre property just off Sandy Beach Rd. Driveway pad and Army Corp. permits plus a partially completed cabin/shop with electricity.  
.....\$88,500

487 MITKOF HIGHWAY



**New Listing!** Over 4+ acres along Mitkof Highway with views of Wrangell Narrows. Includes a rock pit with material available for capping the driveway and developing the building site.  
.....\$160,000

125 LYONS ROAD



Industrial lot with pad and electricity nearby. Great opportunity for gear storage or a shop.  
.....\$70,000

www.PetersburgProperties.com • 772-6000

## PROPERTY

**For Sale - 100' X 125'** lot on Cornelius Road. Lot has water and sewer and has been filled. Ready to go. Appraisal is \$37,500. Call 907-518-1281.  
.....4x7-12b28

**Liv & Heidi's Kjøkken**  
For all your catering needs  
Liv Perschon 907-518-1693  
Heidi Lyons 907-518-0634

**Building lots** - Water views or panoramic mountain views. Residential lots with sunny southern exposure. Call 907-518-1281.  
.....tfn6-23b16

## FOR RENT

**MATTINGLY ELECTRIC LLC.**  
• COMMERCIAL  
• INDUSTRIAL  
• RESIDENTIAL  
**907-772-4455**  
• LICENSED • BONDED • INSURED

**Beachcomber Inn:** Weekly and monthly rentals available. Completely furnished apartments, kitchenettes and rooms. 772-3888.  
.....tfn11-11b14

## JOBS

**Position Opening for a Medical Assistant** in the Clinic at Petersburg Medical Center. Will assist with procedures, pa-

tient care, triage of patients and follow-up care as directed by the physician(s). Must interact well with the public, and have excellent communication and customer relation skills. Position is full time with benefits, 32-40 hours per week. Starting pay is dependent upon experience. Position open until filled. To apply: applications available at PMC or on the hospital website at www.pmcak.org. For more information, contact (907) 772-4291, extension 5719.  
.....tfn17-5b91

**Rainforest Gutters**  
Seamless Steel & Aluminum Gutters  
**518-1289**

**WAVE is hiring** for 3 full-time positions. Advocate, Office Coordinator, and Prevention Coordinator. We offer PTO, paid holidays, and training. For more information visit [petersburg-wave.com](http://petersburg-wave.com).  
.....2x7-5b27

**Maintenance Manager Position** Opening. Job description is available at the office reception desk or call Petersburg Fisheries for further information. (907) 772-4294.  
.....5x7-12b23

**The Petersburg Public Library** has an opening for a permanent part-time (12 hrs per week plus fill in). Library Clerk. Excellent customer service and computer skills are required. Starting wage is \$14.29 per hour increasing to \$15.88 after one year of



## Petersburg Medical Center is now hiring!

We are looking for highly motivated individuals who are interested in on the job training for a career as a Certified Nursing Assistant (CNA). CNAs provide care to patients and LTC residents under the supervision of a nurse. Positions will be at least 10 hours per week with the potential to secure part time or full time employment after successful completion of the CNA class, state test, and active license.

Pay starts at \$14.55/hr (you will be paid during the training) and increases to \$16.55/hr once licensed. For more information about the course, contact Angela Menish (772-4291 ext. 5718) or at [amenish@pmc-health.org](mailto:amenish@pmc-health.org). Applications may be completed online at [www.pmcak.org](http://www.pmcak.org) or picked up at the business office.

Contact Cindy Newman (772-4291 ext. 5719) or at [cnewman@pmc-health.org](mailto:cnewman@pmc-health.org) for employment requirements and benefit information.

employment. A complete job description and employment application can be obtained from the Borough's website at [www.ci.petersburg.ak.us](http://www.ci.petersburg.ak.us). Applications will be accepted at the front desk of the municipal building at 12 South Nordic Drive, by mail to PO Box 329, Petersburg, AK 99833, faxed to: (907)772-3759 or emailed to [daikins@petersburgak.gov](mailto:daikins@petersburgak.gov).  
.....4x7-5b100

**Position Opening for a full time Home Health Registered Nurse (RN)** at Petersburg Medical Center. The RN will work in the home health department to promote and preserve the health and independence of clients in their home setting. He/she must possess proficiency with technology and the ability to work in a fast-paced flexible environment. Position is full time with benefits. Current State of Alaska RN license and driver's license with insured personal vehicle. Applications at PMC or on line at [www.pmcak.org](http://www.pmcak.org). For more information, call Cindy Newman at (907) 772-4291, ext. 5719 or Christie Axmaker ext. 5716.  
.....tfn6-14b102

## Heat Pumps... Experience Counts!

*In the years since we installed the first heat pumps in Petersburg, more and more efficient systems designed specifically for northern climates have evolved. We've been the first to install these new generation systems locally. We specialize in energy-star installations rated to 15 below zero!*

**FLEET REFRIGERATION AND HEATING**  
Licensed • Bonded • Insured  
Since 1988  
**(907)772-4625**

**the Bahá'í Faith**  
"The earth is but one country,  
& mankind its citizens."  
650-7354 or 518-0102  
[www.bahai.org](http://www.bahai.org)

**Position Opening for a Home Health Reception / Admissions Representative** at Petersburg Medical Center. Duties include but are not limited to: scanning, charges, managing referrals and registration, Representative will work with computers – handling insurance verification, entering data, filing, making admission packets, cleaning field bags and equipment, shredding, reconciling visits and the upkeep of patient logs. Part time with benefits, 25 hours per week. Starting at \$16.35 – wage is dependent upon experience. Applications at PMC or on line at [www.pmcak.org](http://www.pmcak.org). Please submit application and resume. For more information, call Cindy Newman at (907) 772-4291 x 5719.  
.....tfn6-7b97

**KEN'S PAINTING:**  
Interior/Exterior Painting & Power Washing  
at an affordable price  
**772-2010 or 772-2028**

**Full time Retail/Office help** wanted. Computer skills necessary. Attention to detail and good customer service skills critical. Wage DOE. Submit resume/application to Pilot Publishing Inc. at 207 N. Nordic Drive or [pilotpub@gmail.com](mailto:pilotpub@gmail.com).  
.....tfn6-7dh

**Reliable, Courteous Persons** needed to sell newspapers on the street and to local businesses each week. Great way for youth to start their college savings account. See Anne or Debbie for information. Apply in person at

207 N. Nordic Drive.  
.....tfn3-29dh

## BOATS AND SUPPLIES

**IFQ's and Fishing permits,** Alaskan Quota and Permits LLC, 907-772-4000/1-888-347-4437.  
.....tfn1-18b16

## MISCELLANEOUS

**Kinder Skog Afternoon Nature Program** is currently enrolling kindergarten age kids for the 2018-2019 school year. Please contact Barb @ 518-0133, Katie 772-4499 or

[KatieHolmlund@hotmail.com](mailto:KatieHolmlund@hotmail.com) or [goodbeginnings@gci.net](mailto:goodbeginnings@gci.net) for more information and/or application.  
.....1x7-5p

## Alaska FLOORCOVERING

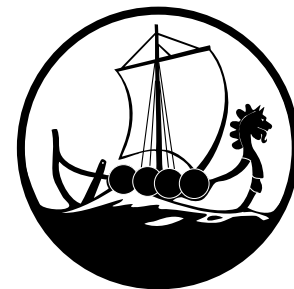
View our products at:  
[www.AlaskaFloorcovering.com](http://www.AlaskaFloorcovering.com)  
**259 Mitkof Hwy. • 772-4333**  
Mon - Fri 10:30 - 5, Sat 10:30 - 1

**Newsprint Roll Ends** - good for packing, table coverings, artwork. Pay by the pound. Available at Petersburg Pilot, 207 N. Nordic Drive.  
.....1x7-5dh

**Become a Subscriber** - Call 772-9393 to have the Petersburg Pilot delivered to your mailbox each Thursday.  
.....1x7-5dh

## NOTICES

**Sons of Norway Bingo**, Friday nights 7 p.m. Doors open at 6 p.m. Must be 19 to play.  
.....tfn5-24b18



## PETERSBURG PILOT

**CLASSIFIED ADS** cost as little as \$10.00 for up to 15 words. 40¢ for additional words. 6% city sales tax additional.

Deadline for classified ads is: 5 P.M. Tuesday  
**Phone 772-9393**  
**FAX 772-4871**  
EMAIL  
[pilotpub@gmail.com](mailto:pilotpub@gmail.com)  
WEB SITE  
[www.petersburgpilot.com](http://www.petersburgpilot.com)  
or stop by  
207 N Nordic Drive  
Petersburg, Alaska