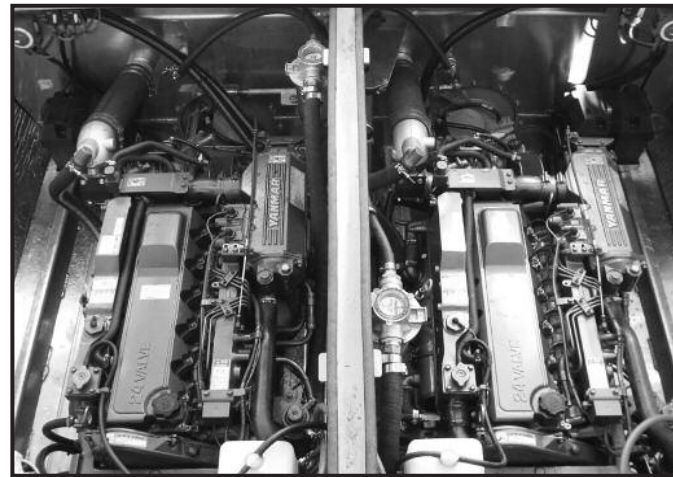


# FOR SALE

## Diesel Engines & Jet Outdrives



Twin 6-cyl Yanmar 6LP high rev diesel engines coupled with 241 Hamilton Jets with turbo impellers. Under 1600 hours. Cruises at 30 knots at 3500 RPM in current Bentz passenger vessel. Fuel burn: 15 gal. per hour.

Equipment new: \$91,000.  
Selling for ~~\$59,000~~ **\$54,000.**

**Contact Ron at  
(907) 772-9393 or 518-1180**

## Petersburg Properties LLC



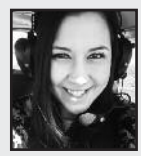
George Doyle  
907-518-0639



Sarah Holmgren  
907-518-0718



Leif Stenford  
206-512-6505



Karna Cristina  
206-554-1522

www.PetersburgProperties.com • 772-6000

### PROPERTY

**Building lots** - Water views or panoramic mountain views. Residential lots with sunny southern exposure. Call 907-518-1281.  
.....tfn6-23b16

**Rainforest Gutters**  
Seamless Steel & Aluminum Gutters  
**518-1289**

### FOR RENT

**Alaska Island Storage**, several sizes to choose from. Call 772-3696.  
.....eowtfn12-14b11

**Dockside Apartments** - available one 2 bed/1 bath unit includes washer/dryer in well maintained 6-unit building, \$10 50/month. Lewis Apartments office unit (formerly chiropractic office) \$1050/month. Email cellcak@gmail.com for application and details or call 907-247-1902.  
.....2x12-21b43

**Apartments for Rent**  
Northwind Apartments is now accepting applications for qualified renters, for 2 and 3 bedroom apartments. Quality living at affordable prices. Call for more information.  
**772-3035**

**3br/2ba Apartment** for rent \$1200.00 + utilities. Located on Cornelius. 518-0651.  
.....tfn10-26b12

**For Rent-1,700 Sq. Ft.** Retail Space on Main St. Will consider dividing space. 907-518-1199.  
.....tfn10-12b15

**Petersburg Elderly and Disabled Housing** is now accepting applications for HUD housing.  
Mt. View Manor  
PO Box 1530  
Petersburg AK 99833  
Federally Assisted payments to qualified renters.  
**772-3445**

**For Rent 2-Bedroom Apt.** above Kinder Komfort on Sing

Lee Alley. \$800.00/mo. plus last month's rent and \$600.00 damage deposit. Parking space, and on-site washer & dryer. No smoking, no pets. Pickup rental application at the Pilot office at 207 N. Nordic Drive. 772-9393.  
.....tfn6-29dh

**KEN'S PAINTING:**  
Interior/Exterior Painting & Power Washing  
at an affordable price  
**772-2010 or 772-2028**

**Rooms and kitchenettes** available at the Narrows. Utilities included. \$500/month and up. 772-4270.  
.....tfn11-19b14

**Beachcomber Inn:** Weekly and monthly rentals available. Completely furnished apartments, kitchenettes and rooms. 772-3888.  
.....tfn11-11b14

**Snow's gone!**  
Anybody want out for Christmas?  
Call John or Taylor  
**772-3909**  
Petersburg Marine

### JOBS

**Position Opening for a Business Office Manager** at Petersburg Medical Center. The Business Office Manager ensures the efficient operation of the Billing with TruBridge and maintains oversight of the charges, credits, contractual agreements, etc. with the systems utilized; develops and improves revenue generating mechanisms for health information management systems and patient account services; assists in the coordination of compliance activities and quality assurance programs; and supervises assigned staff. The Manager communicates with all levels of Hospital leadership, physicians, and ancillary department staff to ensure accurate

**FOR SALE:**  
19"x60"x22" Steel & glass TV stand or coffee table.  
**Call:** 772-9393 days or 518-1912



billing practices for the facility. Position is full time with benefits, wage dependent upon experience. Applications are available at www.pmcak.org or at the PMC Business Office. Position closes on Dec 22 at 5 p.m. Questions, please contact Cindy Newman at 772-4291, extension 5719.  
.....2x12-21b132

**MATTINGLY ELECTRIC LLC.**  
• COMMERCIAL  
• INDUSTRIAL  
• RESIDENTIAL  
**907-772-4455**  
• LICENSED • BONDED • INSURED

**The Forest Service** will be accepting applications for summer seasonal employment through usajobs.gov from December 15 - 21, 2017. The positions will be in the fields of forestry, fisheries, wildlife and recreation. For more information, please stop by the Petersburg Ranger District at 12. N Nordic or call 907-772-3871.  
.....1x12-14b51

**JOB OPENING:**  
**Head Start Lead Teacher**  
APPLICATION DEADLINE: 5:00pm, Monday Dec. 18th  
Theresa Haida accepts electronic applications only.  
**For questions contact HR:**  
HumanResources@ccfhs.gov or call 907/463-7700

**The Petersburg Police Department** has an opening for a permanent full-time Police Officer. Applicants must be available to work all shifts (day shift, swing shift, and graveyard shift), holidays and weekends, and be able to attend out of town training. Starting wage is \$24.63 or more per hour increasing to \$28.12 or more per hour after one year of employment, depending on qualifications. A complete job description and employment application can be obtained from the Borough's website at www.ci.petersburg.ak.us. Applications will be accepted at the front desk of the Borough office, 12 S. Nordic Drive, emailed to mswihart@petersburgak.gov, or mailed to PO Box 329, Petersburg, AK 99833, attn.: Human Resources, until position is filled.  
.....2x12-14b121

**Position Opening for a part time as needed Home Health**

Registered Nurse (RN) / Licensed Practical Nurse (LPN) at Petersburg Medical Center. The RN/LPN will work in the home health department to promote and preserve the health and independence of clients in their home setting. He/she will follow Medicare regulations to evaluate, plan and treat eligible patients in their home setting. Position is considered PRN and will work when there are patients. Must be a RN or LPN in the State of Alaska. Also required, Alaska state driver's license and insured personal vehicle. Applications at PMC or on line at www.pmcak.org. For more information, call Cindy Newman at (907) 772-4291, extension 5719.  
.....tfn11-9b119

**Francie's Nails**  
518-0422 • 102 S. 2nd St.  
Gift Certificates for Xmas available thru Dec. 15th  
Closed Dec. 16th - Jan. 5th

**Position Opening for a Certified Medical Assistant (CMA), Licensed Practical Nurse (LPN) or Registered Nurse (RN)** in the PMC Clinic at Petersburg Medical Center. Will assist with procedures, patient care, triage of patients, interpretation of data and follow-up care as directed by the physician(s). Must interact well with the public, and have excellent communication and customer relation skills. Position is full time with benefits, 32-40 hours per week. Starting pay is dependent upon experience. Position open until filled. To apply: applications available at PMC or on the hospital website at www.pmcak.org. For more information, call Cindy Newman, Human Resources at (907) 772-4291, extension 5719.  
.....tfn11-9b110

**Alaska FLOORCOVERING**  
Will open evenings by appointment  
259 Mitkof Hwy. • 772-4333  
Mon - Fri 10:30 - 5, Sat 10:30 - 1

### SERVICES

**D&D Tree Service LLC:** Licensed, bonded, and insured general contractors. Offering tree topping, limbing for view, danger trees felled or taken down in pieces, brush cutting, etc. In town or remote. Now offering free estimates for roof cleaning and gutter cleaning. Don Stevens D.B.A. 617-5585.  
.....tfn9-7bcc45

### BOATS AND SUPPLIES

**IFQ's and Fishing permits,** Alaskan quota and permits. 907-772-4000/1-888-347-4437.  
.....tfn7-16b15

### MISCELLANEOUS

**2013 811 Arctic Fox Camper** Short Bed, Propane Generator \$22,000. 650-7440.  
.....2x12-21b12

**Heat Pumps... Experience Counts!**  
In the years since we installed the first heat pumps in Petersburg, more and more efficient systems designed specifically for northern climates have evolved. We've been the first to install these new generation systems locally. We specialize in energy-star installations rated to 15 below zero!  
**FLEET REFRIGERATION AND HEATING**  
Licensed • Bonded • Insured Since 1988  
**(907)772-4625**

**For Sale- Honda HS724TA** Snowblower w/tracks. Good Condition, includes owner manual. Low Hours, \$800. Call Ron 772-9393 or 518-1180 or see at The Pilot.  
.....tfn12-14dh

**Need to make a little extra cash?**  
**HAVE A GARAGE SALE!**  
Draw customers to your sale with a classified ad.  
petersburgpilot 772-9393 pilotpub@gmail.com

**Competitive Printing** - No obligation price quotes. 10 -14 day delivery on many jobs. Petersburg Pilot. 207 N. Nordic Drive. Call for prices. 772-9393.  
.....1x12-14dh

**the Bahá'í Faith**  
"The earth is but one country, & mankind its citizens."  
650-7354 or 518-0102  
www.bahai.org

**Rubber stamps available** at Petersburg Pilot. Custom made to your size and specifications. 207 N. Nordic Drive.  
.....1x12-14dh

### NOTICES

**Sons of Norway Bingo.** Friday nights 7 p.m. Doors open at 6 p.m. Must be 19 to play.  
.....tfn12-7b18