

**CLASSIFIED advertisements are a safe bet, Thanks to our READERSHIP!**



**Over 82% of Pilot readers turn to the classifieds each week!**

Place your sale items, job offers, services, classes and notices on the classified page and put our paper to work for you!

At \$9.00 for up to 15 words, and only 40¢ per additional word, it's amazingly affordable!

**Contact us with your advertisement today!**



Phone: 907-772-9393  
 Fax: 907-772-4871  
 P.O. Box 930  
 Petersburg, AK 99833  
 Email: pilotpub@gmail.com

**Petersburg Properties LLC**



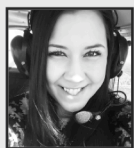
George Doyle  
907-518-0639



Sarah Holmgren  
907-518-0718



Leif Stenford  
206-512-6505



Karna Cristina  
206-554-1522

[www.PetersburgProperties.com](http://www.PetersburgProperties.com) • 772-6000

**PROPERTY**

**Building lots** - Water views or panoramic mountain views. Residential lots with sunny southern exposure. Call 907-518-1281.  
 .....tfn6-23b16

**Rainforest Gutters**

Seamless Steel & Aluminum Gutters  
**518-1289**

**FOR RENT**

**For Rent-1,700 Sq. Ft.** Retail Space on Main St. Will consider dividing space. 907-518-1199.  
 .....tfn10-12b15

**For Rent 2-Bedroom Apt.** above Kinder Komfort on Sing Lee Alley. \$800.00/mo. plus last month's rent and \$600.00 damage deposit. Parking space, and on-site washer & dryer. No smoking, no pets. Pickup rental application at the Pilot office at 207 N. Nordic Drive. 772-9393.  
 .....tfn6-29dh

**Beachcomber Inn:** Weekly and monthly rentals available. Completely furnished apartments, kitchenettes and rooms. 772-3888.  
 .....tfn11-11b14

**JOB**

**the Bahá'í Faith**  
 "The earth is but one country, & mankind its citizens."  
 650-7354 or 518-0102  
[www.bahai.org](http://www.bahai.org)

**Clerk of Court II**, Alaska Court System, Petersburg, Alaska. \$3,224.00 monthly. Closing Date: February 5, 2018. The Alaska Court System (ACS) is recruiting for a Clerk of Court II in the Petersburg Trial Court. The incumbent will plan, implement, direct, and monitor all non-judicial activities of the court and directly manage one part-time deputy clerk. How to apply: Complete recruitment information is available on Workplace Alaska, <http://workplace.alaska.gov>.

Applicants must submit an application through Workplace Alaska by 5:00 p.m., Monday, February 5, 2018. For more information, contact the Alaska Court System Human Resources Department at [recruitment@akcourts.us](mailto:recruitment@akcourts.us) or 907-264-8242. The Alaska Court System is an equal employment opportunity employer and supports workplace diversity.  
 .....2x2-1b123

**Position Opening in the Plant Operations** department performing Housekeeping/Laundry duties at Petersburg Medical Center. Provides cleaning of hospital and all of the departments within. Performs laundry duties at least two days a week. Housekeeping & laundry are physical jobs and the individual must be able to lift, stoop, bend and clean. Full time with benefits. Wage dependent upon experience. Position open until filled. Applications are available at the PMC business office or on the hospital website at [www.pmcak.org](http://www.pmcak.org). For more information, call Cindy Newman at 772-4291, extension 5719.  
 .....tfn1-18b91

**MATTINGLY ELECTRIC LLC.**

- COMMERCIAL
- INDUSTRIAL
- RESIDENTIAL

**907-772-4455**  
 • LICENSED • BONDED • INSURED

**First Bank is accepting** applications for a full-time New Account Representative. Applicants must be organized, self-motivated, flexible and great problem solvers. Main responsibilities will be opening and maintaining accounts, as well as recommending products and services to customers. First Bank offers competitive salaries, health insurance, paid holidays, vacation benefits and 401(k) retirement plans. Visit our branch or our website [www.FirstBankAK.com](http://www.FirstBankAK.com) for application instructions. First Bank is EOE/M/F/Vet/Disability. Member FDIC.  
 .....tfn1-4b78

**Position open for Ward Clerk**, Full Time and Part Time, at Petersburg Medical Center. The Ward Clerk works at the

nurse's station at Petersburg Medical Center. Handles clerical duties on a nursing unit, including admission of patients, patient registration, working on insurance authorizations, reception, transmittal of messages, records, directing guests, mail and transcription. May assist in inventorying and ordering supplies. Requires knowledge of medical terminology, keyboarding skills, and at least 2 years prior clerical experience. Positions are with benefits, 10 hours per day. Starting wage is \$16.02 per hour. Position(s) open until filled. Applications available at [www.pmcak.org](http://www.pmcak.org) or at the Medical Center business office. Contact 772-4291, ext. 5719 for more information.  
 .....tfn12-21b115

**Heat Pumps... Experience Counts!**

*In the years since we installed the first heat pumps in Petersburg, more and more efficient systems designed specifically for northern climates have evolved. We've been the first to install these new generation systems locally. We specialize in energy-star installations rated to 15 below zero!*

**FLEET REFRIGERATION AND HEATING**  
 Licensed • Bonded • Insured  
 Since 1988  
**(907)772-4625**

**Position Opening for** a part time as needed Home Health Registered Nurse (RN) / Licensed Practical Nurse (LPN) at Petersburg Medical Center. The RN/LPN will work in the home health department to promote and preserve the health and independence of clients in their home setting. He/she will follow Medicare regulations to evaluate, plan and treat eligible patients in their home setting. Position is considered PRN and will work when there are patients. Must be a RN or LPN in the State of Alaska. Also required, Alaska state driver's license and insured personal vehicle. Applications at PMC or on line at [www.pmcak.org](http://www.pmcak.org). For more information, call Cindy Newman at (907) 772-4291, extension 5719.  
 .....tfn11-9b119

**Alaska FLOORCOVERING**

**Will open evenings by appointment**

**259 Mitkof Hwy. • 772-4333**  
**Mon - Fri 10:30 - 5, Sat 10:30 - 1**

**Position Opening for** a Medical Assistant (MA), Licensed Practical Nurse (LPN) or Registered Nurse (RN) in the PMC Clinic at Petersburg Medical Center. Will assist with procedures, patient care, triage of patients, interpretation of data and follow-up care as directed

by the physician(s). Must interact well with the public, and have excellent communication and customer relation skills. Position is full time with benefits, 32-40 hours per week. Starting pay is dependent upon experience. Position open until filled. To apply: applications available at PMC or on the hospital website at [www.pmcak.org](http://www.pmcak.org). For more information, call Cindy Newman, Human Resources at (907) 772-4291, extension 5719.  
 .....tfn12-21b109

**Apartments for Rent**

Northwind Apartments is now accepting applications for qualified renters, for 2 and 3 bedroom apartments. Quality living at affordable prices. Call for more information.  
**772-3035**

**SERVICES**

**Need help shoveling snow?** Call 907-518-0527, for free estimate.  
 .....1x2-1p9

**D&D Tree Service LLC:** Licensed, bonded, and insured general contractors. Offering tree topping, limbing for view, danger trees felled or taken down in pieces, brush cutting, etc. In town or remote. Now offering free estimates for roof cleaning and gutter cleaning. Don Stevens D.B.A. 617-5585.  
 .....tfn9-7bcc45

**KEN'S PAINTING:**  
 Interior/Exterior Painting & Power Washing  
 at an affordable price  
**772-2010 or 772-2028**

**BOATS AND SUPPLIES**

**IFQ's and Fishing permits**, Alaskan Quota and Permits LLC, 907-772-4000/1-888-347-4437.  
 .....tfn1-18b16

**Liv & Heidi's Kjøkken**  
 For all your catering needs  
 Liv Perschon 907-518-1693  
 Heidi Lyons 907-518-0634

**MISCELLANEOUS**

**Business Forms** to make your office run smoother. Check it out at Petersburg Pilot, 207 N. Nordic Drive.  
 .....1x2-1dh

**Classified Deadline** is 5 p.m. each Tuesday for ads appearing in Thursday's paper. Call 772-9393 or drop by 207 N. Nordic Drive.  
 .....1x2-1dh

**NOTICES**

**Sons of Norway Bingo**, Friday nights 7 p.m. Doors open at 6 p.m. Must be 19 to play.  
 .....tfn12-7b18