

Classifieds

Classifieds

PROPERTY

Building lots - Water views or panoramic mountain views. Residential lots with sunny southern exposure. Call 907-518-1281.
.....tfn6-23b16

FOR RENT

Alaska Island Storage, several sizes to choose from. Call 772-3696.
.....eowtfn10-18b11

Cozy 1-bedroom, 2nd floor apartment on Hammer Slough, next to Centennial Park. \$850/mo., includes utilities. References, deposit required. 518-1530 after 5:00 pm.
.....tfn10-11b26

Downtown Studio Apartment. Furnished, no smokers or pets. 772-3359.
.....tfn9-27b10

Beachcomber Inn: Weekly and monthly rentals available. Completely furnished apartments, kitchenettes and rooms. 772-3888.
.....tfn11-11b14

JOBS

Local business seeking self-motivated person familiar with tools, attentive to details, ability to follow directions precisely. Send resume: fleetref@aptalaska.net. Do not phone.
.....tfn10-18b25

Petersburg's Parks and Recreation Department has an opening for a full-time Facilities Supervisor. This position is a benefited position and starting wage is \$20.90 per hour, increasing to \$22.06 after 6 months and to \$23.22 at a full year of employment. Key duties include but are not limited to: training, supervising, and scheduling staff, ensuring facilities are operated efficiently and safely, collecting and compiling financial and participation information for reports, assisting in developing facility schedules, and becoming a certified lifeguarding instructor. To apply for this opportunity please review the job description and complete an employment application available on the Bor-

Alaska Yacht & Vessel Service



Time to paint your boat ?
Book your space
for next Spring
Call Steve Berry
518-4080

ough's website at www.ci.petersburg.ak.us. You can submit an application via email to daikins@petersburgak.gov, via fax to (907)772-3759 or deliver in person to the Municipal Building at 12 South Nordic Drive. If you have questions about the position or application process please contact Danielle Aikins, Deputy Clerk at (907)772-5404 or via email at daikins@petersburgak.gov.
.....2x10-25b166

Position open for Ward Clerk, Part Time with Benefits, at Petersburg Medical Center. The Ward Clerk works at the nurse's station at Petersburg Medical Center. Handles clerical duties on a nursing unit, including admission of patients, patient registration, working on insurance authorizations, reception, transmittal of messages, records, directing guests, mail and transcription. May assist in inventorying and ordering supplies. Requires knowledge of medical terminology, keyboarding skills, and at least 2 years prior clerical experience. The Ward Clerk is 10-hours per day; starting wage is \$16.10 per hour. Position open until filled. Applications available at www.pmcak.org or at the Medical Center business office. Contact 772-4291, ext. 5719 for more information.
.....tfn10-18b113

Position Opening for a part time as needed Activities Assistant at Petersburg Medical Center. The Activities Assistant works in the long term care providing individual and group activities that help resident maintain independence and allows participation in past hobbies, interests, encourages social interaction and focuses on the needs and interest of the residents and patients. The position works on

an occasional bases when needed. Starting pay is \$15.60 + a 10% differential in lieu of benefits. Applications available on line at www.pmcak.org or at PMC in the business office. The position will remain open until filled. For more information, call (907) 772-4291, extension 5719.
.....tfn10-18b106

Mountain View Manor has an opening for a full-time, permanent Resident Assistant. This position starts at \$16.09 per hour and is a benefited position. Applications are available on the Borough website and at the Borough office. You can submit your application in person to the Borough, located at 12 South Nordic Drive, mail to P.O. Box 329, Petersburg, AK 99833, fax to (907)772-3759 or email to daikins@petersburgak.gov.
.....2x10-18b73

Petersburg Indian Association has an opening for a Tribal Comprehensive Plan Development Assistant. Minimum Qualifications: GED or High School diploma is required. A college degree is recommended, but not required. Must have a valid driver's license and be 18 years or older. Must be self-motivated and computer savvy. This position is for 20-30 hours a week. Native Preference. A complete job description and employment application can be obtained from the Petersburg Indian Association office. Applications will be accepted at the PIA office at 15 North 12th Street or mailed to P.O. Box 1418, Petersburg, Alaska 99833, attn.: Angela Davis. Position open until filled.
.....3x10-18b106

Petersburg Indian Association has an opening for a Housing Assistant. Applicant must have a high school diploma, good oral,



Petersburg Medical Center is now hiring!

We are looking for highly motivated individuals who are interested in on the job training for a career as a Certified Nursing Assistant (CNA). CNAs provide care to patients and LTC residents under the supervision of a nurse. Positions will be at least 10 hours per week with the potential to secure part time or full time employment after successful completion of the CNA class, state test, and active license.
Pay starts at \$14.55/hr (you will be paid during the training) and increases to \$16.55/hr once licensed. For more information about the course, contact Angela Menish (772-4291 ext. 5718) or at amenish@pmc-health.org. Applications may be completed online at www.pmcak.org or picked up at the business office.
Contact Cindy Newman (772-4291 ext. 5719) or at cnewman@pmc-health.org for employment requirements and benefit information.

writing and public speaking skills and possess a valid Alaska driver's license. Knowledge of NAHASDA, public housing and Alaska Tenant Laws a plus. This position is part time 20 hours per week. Native Preference. A complete job description and employment application can be obtained from the Petersburg Indian Association office. Applications will be accepted at the PIA office at 15 North 12th Street or mailed to P.O. Box 1418, Petersburg, Alaska 99833, attn.: Angela Davis. Position open until filled. \$16 per hour D.O.E.
.....3x10-18b105

Petersburg Indian Association has an opening for a Tribal Trans-

portation Program (TTP) construction and maintenance foreman/mechanic, permanent with some holidays. The primary duty is performing and directing the TTP crew on a variety of maintenance and construction duties for PIA's transportation facilities: road, trail, sidewalk, bike path, emergency shelter, and harbor. Additionally, operation and repair of TTP's equipment, vehicles,



HELP WANTED

Are you reliable, outgoing and a self-starter? Can you multi-task while providing excellent customer service? Are you able to work a variety of hours and shifts?

Hammer & Wikan, Inc. has employment opportunities for FT/PT Cashier Clerks at our Convenience store. We have openings at our grocery store for FT/PT Cashier Clerks, Produce Clerks, Daytime Stocker and a Courtesy / Delivery Truck Driver. We offer a competitive wage and a great benefit package!

Applications available at our business office located above the Convenience Store at 218 North Nordic Dr., or phone us at (907) 772-4811

MATTINGLY ELECTRIC LLC.
• COMMERCIAL
• INDUSTRIAL
• RESIDENTIAL
907-772-4455
• LICENSED • BONDED • INSURED

Petersburg Properties LLC



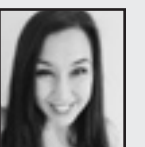
George Doyle
907-518-0639



Sarah Holmgren
907-518-0718



Leif Stenford
206-512-6505



Karna Cristina
206-554-1522



New to Market! Recently improved waterfront lot with pad along Wrangell Narrows. Almost a 1/4 of an acre with utilities. Located adjacent to the bike path and close to downtown Petersburg.
.....\$289,000



New to Market! Great starter cabin on a salmon stream at low tide. Wildlife and waterfowl are some of your neighbors. Clamming and crabbing just down the beach.
.....\$65,000

www.PetersburgProperties.com • 772-6000

and tool inventory is required. The work will be physically demanding. Required is at least three years of mechanic and construction/maintenance experience and a Class A commercial driver's license. Starting wage DOE. Native Preference. A complete job description and employment application can be obtained from the Petersburg Indian Association office. Applications will be accepted at the PIA office at 15 North 12th Street or mailed to P.O. Box 1418, Petersburg, Alaska 99833, attn.: Angie Davis.
.....3x10-18b137

Petersburg Indian Association has an opening for a Tribal Transportation Program (TTP) construction and maintenance laborer, permanent with some holidays. The primary duty is performing a variety of maintenance and construction duties for PIA's transportation facilities: road, trail, sidewalk, bike path, emergency shelter, and harbor. Mechanical and construction/maintenance experience preferred. The work will be physically demanding. A Class A commercial driver's license will be required within six months of hire. Starting wage DOE. Native Preference. A complete job description and employment application can be obtained from the Petersburg Indian Association office. Applications will be accepted at the PIA office at 15 North 12th Street or mailed to P.O. Box 1418, Petersburg, Alaska 99833, attn.: Angie Davis.
.....tfn9-27b123

Petersburg Indian Association has an opening for a Tribal Transportation Program (TTP) construction and maintenance laborer, permanent with some holidays. The primary duty is performing a variety of maintenance and construction duties for PIA's transportation facilities: road, trail, sidewalk, bike path, emergency shelter, and harbor. An interest in learning

operation and repair of equipment, vehicles, and tools preferred. The work will be physically demanding. A Class A commercial driver's license will be required within six months of hire. Starting wage DOE. Native Preference. A complete job description and employment application can be obtained from the Petersburg Indian Association office. Applications will be accepted at the PIA office at 15 North 12th Street or mailed to P.O. Box 1418, Petersburg, Alaska 99833, attn.: Angie Davis.
.....3x10-18b125

Are you looking for an exciting new career that is fulfilling, offers job advancement, work-life balance and paid time off? Petersburg-Wrangell Insurance is adding to our team and is seeking a full time Customer Service Representative who is driven, eager to learn and likes helping people. You must be familiar with computers, a proficient typist, able to work full time, and be customer oriented. Obtaining Insurance license is a requirement. Materials and on the job training will be provided. Join the P-W Insurance team and be on your way to a fun and rewarding career. Email your resume to susane@p-wins.com, check out our website at www.p-wins.com or feel free to stop by with your resume.
.....tfn1-18b16

Full time Retail/Office help wanted. Computer skills necessary. Attention to detail and good customer service skills critical. Wage DOE. Submit resume/application to Pilot Publishing Inc. at 207 N. Nordic or pilotpub@gmail.com.
.....tfn6-7dh

SERVICES

Piano tuner Virgil Hale will be in town Oct. 31. Call Dana for

PETERSBURG ACUPUNCTURE
Jasmin Jones, MSTOM LAc
(907) 518-1675 • Tue-Sat By Appointment



NOW HIRING Transportation Security Officers at Petersburg Airport (PSG)

No Experience Required
Full-time positions starting at \$21.73 per hour
(includes 28.02% locality pay, 5.3% COLA plus 20% retention incentive; this incentive is subject to periodic review and may be adjusted)

PLUS: Federal benefits • Paid, ongoing training

TSA offers an attractive benefits package including: health, dental, vision, life and long-term care insurance; retirement plan; Thrift Savings Plan similar to 401(k); Flexible Spending Account; Employee Assistance Program; personal leave days and paid federal holidays.

Apply online at: tsajobs.tsa.dhs.gov
or text "TSO" to 95495 or call 1-877-872-7990



TSA
@CareersatTSA
U.S. Citizenship Required
Equal Opportunity Employer
Standard Messaging and Data Rates Apply

Heat Pumps... Experience Counts!

In the years since we installed the first heat pumps in Petersburg, more and more efficient systems designed specifically for northern climates have evolved. We've been the first to install these new generation systems locally. We specialize in energy-star installations rated to 15 below zero!

FLEET REFRIGERATION AND HEATING
Licensed • Bonded • Insured
Since 1988
(907)772-4625

appointment 772-3899.
.....3x11-1b15
We've Moved - Alaska Fibre, Inc. is now located at 2.74 mile Mitkof Hwy. in the former Reid Warehouse building. 772-2173.
.....9x11-22b21

BOATS AND SUPPLIES

IFQ's and Fishing permits, Alaskan Quota and Permits LLC, 907-772-4000/1-888-347-4437.
.....tfn1-18b16

MISCELLANEOUS

2,000 PSI Lightweight Electric Power Washer w/instruction manual, \$125. See at the Pilot. 772-9393.
.....tfn10-18dh

Competitive Printing - No obligation price quotes. 10 -14 day delivery on many jobs. Petersburg Pilot. 207 N. Nordic Drive. Call for prices. 772-9393.
.....1x10-18dh

KEN'S PAINTING:
Interior/Exterior Painting & Power Washing
at an affordable price
772-2010 or 772-2028

Rubber stamps available at Petersburg Pilot. Custom made to your size and specifications. 207 N. Nordic Drive.
.....1x10-18dh

SALES

Betty Pederson's Garage Pre-Estate Sale. This Saturday, Oct. 20, 11am-3pm and Sunday 1pm-3pm. Sale is in the garage behind 1110 N. Nordic. Enter

Therapeutic Massage
Swedish, Shiatsu & Reflexology
Nance Zaic, LMT - 772-4180
Gift Certificates Available

from Wrangell Ave only. The garage is full and overflowing. Almost all different items than sale last year. Kitchen items, clean bedding, sleeping bags, tools, outboard, sport yaks, table linens, beauty products, jewelry boxes, deck chairs, coolers, printer, cookbooks, travel bags, beautiful comforters, cast iron pans. Too many items to mention all. Priced to go. No early sales.
.....1x10-18b84

Coming soon - Petersburg Oktoberfest Art Share. October 27, 2018. Saturday 10am-3pm. Community Gym. Homemade in the USA. Arts, Crafts, Food. Sponsored by the Muskeg Males.
.....1x10-18b26

PERSONALS

Honest and maybe awkward non-drinking 32 y.o. man seeking warm woman of gentle temperament for companionship. Enjoys computer games with minor interest in hiking, archery and philosophy. 360-318-3751.
.....2x10-25p

NOTICES

Sons of Norway Bingo, Friday nights 7 p.m. Doors open at 6 p.m. Must be 19 to play.
.....tfn5-24b18