

Classifieds

PROPERTY

Waterfront acreage for sale in the southern Bahamas. Water, power and cable T.V.-internet adjacent to lots. Located on a family island, 1.39 to 1.73 acre lots, \$45-\$56,000. Build a cottage for a great winter retreat. Excellent deep sea fishing, snorkeling, scuba, beach combing and bird watching. For information, (907)-518-0550.

.....4x11-22b54
Building lots - Water views or panoramic mountain views. Residential lots with sunny southern exposure. Call 907-518-1281.

.....tfn6-23b16

MATTINGLY
ELECTRIC LLC.

- COMMERCIAL
- INDUSTRIAL
- RESIDENTIAL

907-772-4455

• LICENSED • BONDED • INSURED

FOR RENT

Dockside Apartments - available 2 bed/1 bath unit includes washer/dryer in well maintained 6-unit building, \$1050/month. Email cclleak@gmail.com for application and details or call 907-247-1902

.....2x11-8b32

Cozy 1-bedroom, 2nd floor apartment on Hammer Slough, next to Centennial Park. \$850/mo., includes utilities. References, deposit required. 518-1530 after 5:00 pm.

.....tfn10-11b26

Therapeutic Massage
Swedish, Shiatsu & Reflexology
Nance Zaic, LMT - 772-4180
Gift Certificates Available

Beachcomber Inn: Weekly and monthly rentals available. Completely furnished apartments, kitchenettes and rooms. 772-3888.

.....tfn11-11b14

JOBS

Bartender Needed for Harbor Bar, day shift preferred. See Darcy at Bar or call 772-4526.

.....1x11-8b15

Part time janitorial position available at the Elks Lodge. 4 hours per day, 6 days per week. Nov 26 till Feb 2nd. Apply via email to bpoe1615@gmail.com or drop off application at the Club after 4PM.

.....3x11-15b38

REACH INC. We're Hiring. Are you a caring person with many talents and interests? Have you considered providing Direct Care Services to help a person with disabilities try new things and enjoy activities in the community of Petersburg? REACH

.....2x11-8b44

ALPS Federal Credit Union is accepting applications for a part-time Member Service Representative. Desired applicant must have cash handling and customer service experience. Prior training in human relation skills is highly desirable. This position is located at our Petersburg Branch and will be a minimum of 20 hours per week. Some full days and 40 hour weeks will be required upon request. \$13/DOE. To apply, please inquire in person, e-mail application or resume to: hr@alpsfcu.org. To see a full job description please visit our website www.alpsfcu.org or Petersburg Branch. We look forward to welcoming you to our team. ALPS FCU Staff.

.....2x11-8b108

Petersburg Properties LLC



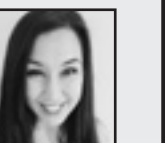
George Doyle
907-518-0639



Sarah Holmgrain
907-518-0718



Leif Stenford
206-512-6505



Karna Cristina
206-554-1522



Price lowered on the 4 acre parcel located along Mitkof Highway. Excellent water and mountain views.
 NOW! \$140,000



New to Market! 3Bd/2.5 bath home with over 2500sqft of living space. Recently remodeled and move-in ready. Concrete approach to entry and garage.
 \$445,000

www.PetersburgProperties.com • 772-6000

is looking for Direct Service Providers for part-time employment. Go to our website at REACHAK.org or contact Hannah Logan 907-772-3490. REACH Inc. an equal opportunity employer.

.....2x11-8b69

.....2x11-8b69

.....2x11-8b69

.....2x11-8b69

.....2x11-8b69

.....2x11-8b69

.....2x11-8b69

.....2x11-8b69

.....2x11-8b69

.....2x11-8b69

.....2x11-8b69

.....2x11-8b69

.....2x11-8b69

.....2x11-8b69

.....2x11-8b69

.....2x11-8b69

.....2x11-8b69

.....2x11-8b69

.....2x11-8b69

.....2x11-8b69

.....2x11-8b69

.....2x11-8b69

.....2x11-8b69

.....2x11-8b69

.....2x11-8b69

.....2x11-8b69

.....2x11-8b69

.....2x11-8b69

.....2x11-8b69

.....2x11-8b69

.....2x11-8b69

.....2x11-8b69

.....2x11-8b69

.....2x11-8b69

.....2x11-8b69

.....2x11-8b69

.....2x11-8b69

.....2x11-8b69

.....2x11-8b69

.....2x11-8b69

.....2x11-8b69

.....2x11-8b69

.....2x11-8b69

.....2x11-8b69

.....2x11-8b69

.....2x11-8b69

.....2x11-8b69

.....2x11-8b69

.....2x11-8b69

.....2x11-8b69

.....2x11-8b69

.....2x11-8b69

.....2x11-8b69

.....2x11-8b69

.....2x11-8b69

.....2x11-8b69

Effective November 1
Petersburg branch

New
Mon-Fri Hours
9am - 5pm

ALPS alpsfcu.org

Classifieds



Petersburg Medical Center is now hiring!

We are looking for highly motivated individuals who are interested in on the job training for a career as a Certified Nursing Assistant (CNA). CNAs provide care to patients and LTC residents under the supervision of a nurse. Positions will be at least 10 hours per week with the potential to secure part time or full time employment after successful completion of the CNA class, state test, and active license.

Pay starts at \$14.55/hr (you will be paid during the training) and increases to \$16.55/hr once licensed. For more information about the course, contact Angela Menish (772-4291 ext. 5718) or at amenish@pmc-health.org. Applications may be completed online at www.pmcak.org or picked up at the business office.

Contact Cindy Newman (772-4291 ext. 5719) or at cnewman@pmc-health.org for employment requirements and benefit information.

tion, working on insurance authorizations, reception, transmission of messages, records, directing guests, mail and transcription. May assist in inventorying and ordering supplies. Requires knowledge of medical terminology, keyboarding skills, and at least 2 years prior clerical experience. The Ward Clerk is 10-hours per day; starting wage is \$16.10 per hour. Position open until filled. Applications available at www.pmcak.org or at the Medical Center business office. Contact 772-4291, ext. 5719 for more information.

.....tfn11-1b111

sition works on an occasional bases when needed. Starting pay is \$15.60 + a 10% differential in lieu of benefits. Applications available on line at www.pmcak.org or at PMC in the business office. The position will remain open until filled. For more information, call (907) 772-4291, extension 5719.

.....tfn10-18b106

SERVICES

We've Moved - Alaska Fibre, Inc. is now located at 2.74 mile Mitkof Hwy. in the former Reid Warehouse building. 772-2173.

.....9x11-22b21

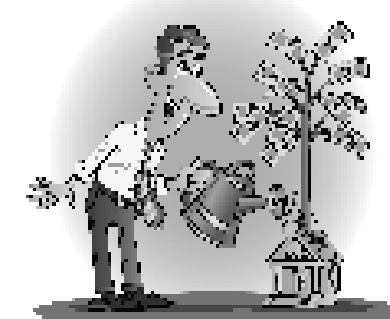
Heat Pumps... Experience Counts!

In the years since we installed the first heat pumps in Petersburg, more and more efficient systems designed specifically for northern climates have evolved. We've been the first to install these new generation systems locally. We specialize in energy-star installations rated to 15 below zero!

FLEET REFRIGERATION AND HEATING
Licensed • Bonded • Insured
Since 1988
(907)772-4625

Position Opening for a part time as needed Activities Assistant at Petersburg Medical Center. The Activities Assistant works in the long term care providing individual and group activities that help resident maintain independence and allows participation in past hobbies, interests, encourages social interaction and focuses on the needs and interest of the residents and patients. The po-

Help Grow Your Business



WITH CLASSIFIED ADS

CLASSIFIED ADS
 cost as little as
\$10.00 for up to 15 words.
40¢ for additional words.
6% city sales tax additional.
 Deadline for classified ads is:
 5 P.M. Tuesday

PHONE 772-9393
FAX 772-4871
 EMAIL - pilotpub@gmail.com
 WEB SITE -
www.petersburgpilot.com
 or stop by
 207 N Nordic Drive



BOATS AND SUPPLIES

IFQ's and Fishing permits, Alaskan Quota and Permits LLC, 907-772-4000/1-888-347-4437.

.....tfn1-18b16

MISCELLANEOUS

For Sale -1992 Yamaha Bravo BR250TT snowmobile. Located in Petersburg. Runs fine. \$850. Ron, 772-9393 days or 518-1180 eves.

.....tfn11-8dh

Alaska FLOORCOVERING

View our products at:
 www.AlaskaFloorcovering.com
259 Mitkof Hwy. • 772-4333
 Mon - Fri 10:30 - 5, Sat 10:30 - 1

Dog Carrier & Kennel -For 50-70 lb. dog. Rigid plastic with metal closure. \$60. See at The Pilot. 772-9393 or 518-1912.

.....tfn11-1dh

2,000 PSI Lightweight Electric Power Washer w/instruction manual, \$125. See at the Pilot. 772-9393.

.....tfn10-18dh

Business Forms to make your office run smoother. Check it out at Petersburg Pilot, 207 N. Nordic Drive.

.....1x11-8dh

Classified Deadline is 5 p.m. each Tuesday for ads appearing in Thursday's paper. Call 772-9393 or drop by 207 N. Nordic Drive.

.....1x11-8dh

NOTICES

Sons of Norway Bingo, Friday nights 7 p.m. Doors open at 6 p.m. Must be 19 to play.

.....tfn5-24b18